

Detox Center Approved Development Site



14108 E. 3rd Ave, Spokane Valley, WA 99216

- For Lease: Build to Suit or Land Lease Opportunity
- City Approved Conditional Use Permit recorded
- Parcel #45232.0207
- Site 18,000 SF +/-

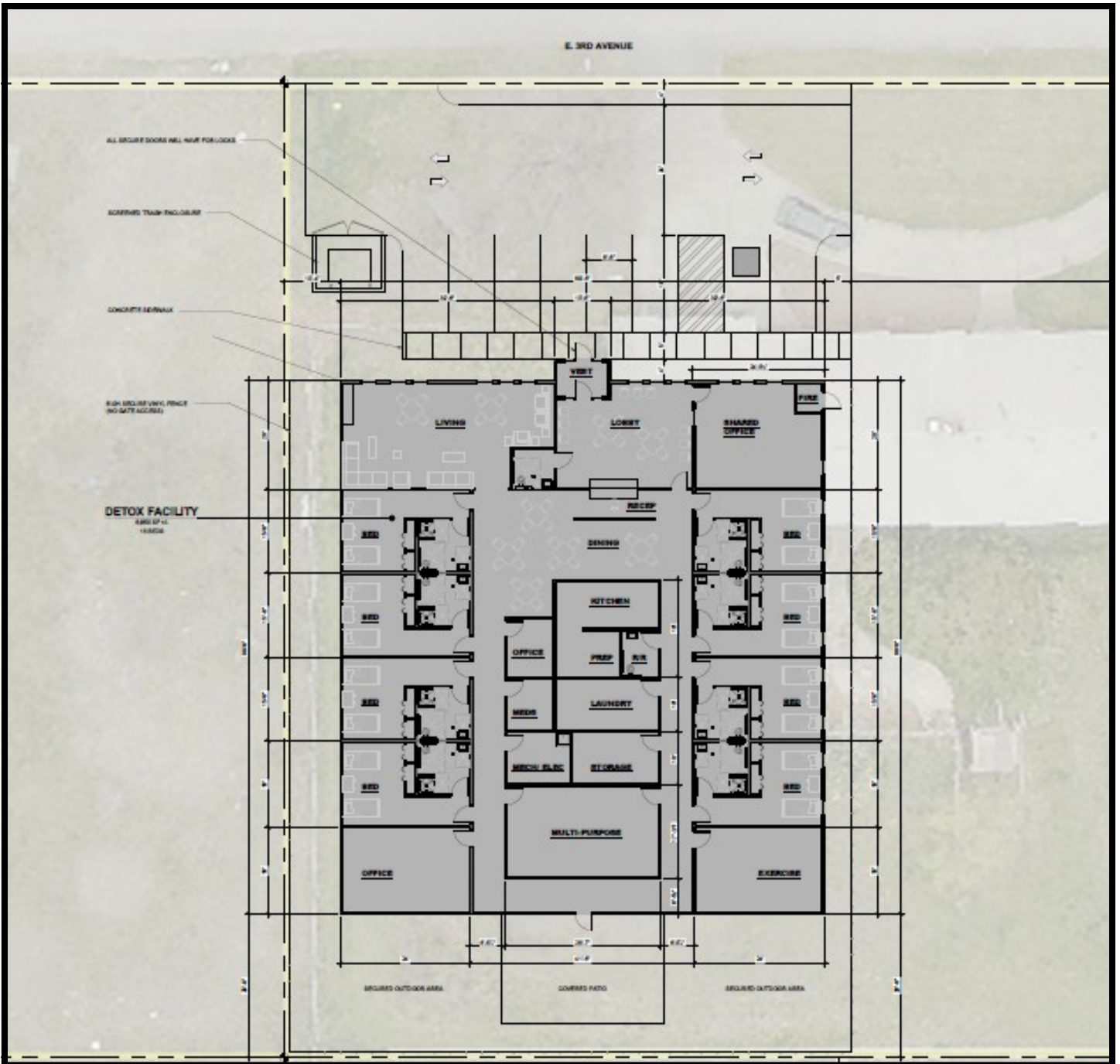
- Preliminary Site Plan and Floor Plan
- Centrally Located off the I-90 Evergreen Corridor
- Near a variety of amenities and medical
- Zoning: Multi Family



Gene Arger, Broker
G. Arger Co. Real Estate Inc.
(509) 926-5311 office
(509) 844-8814 cell
ggarger@argenco.com
www.argenco.com



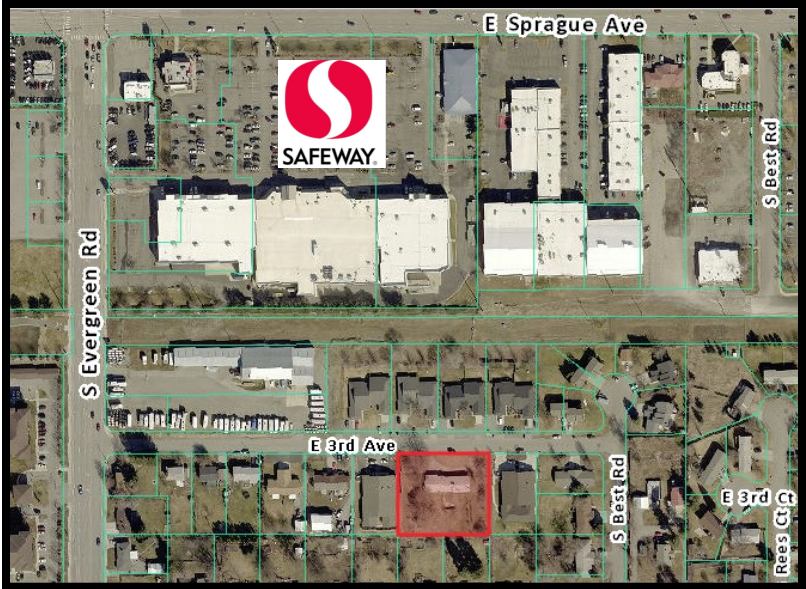
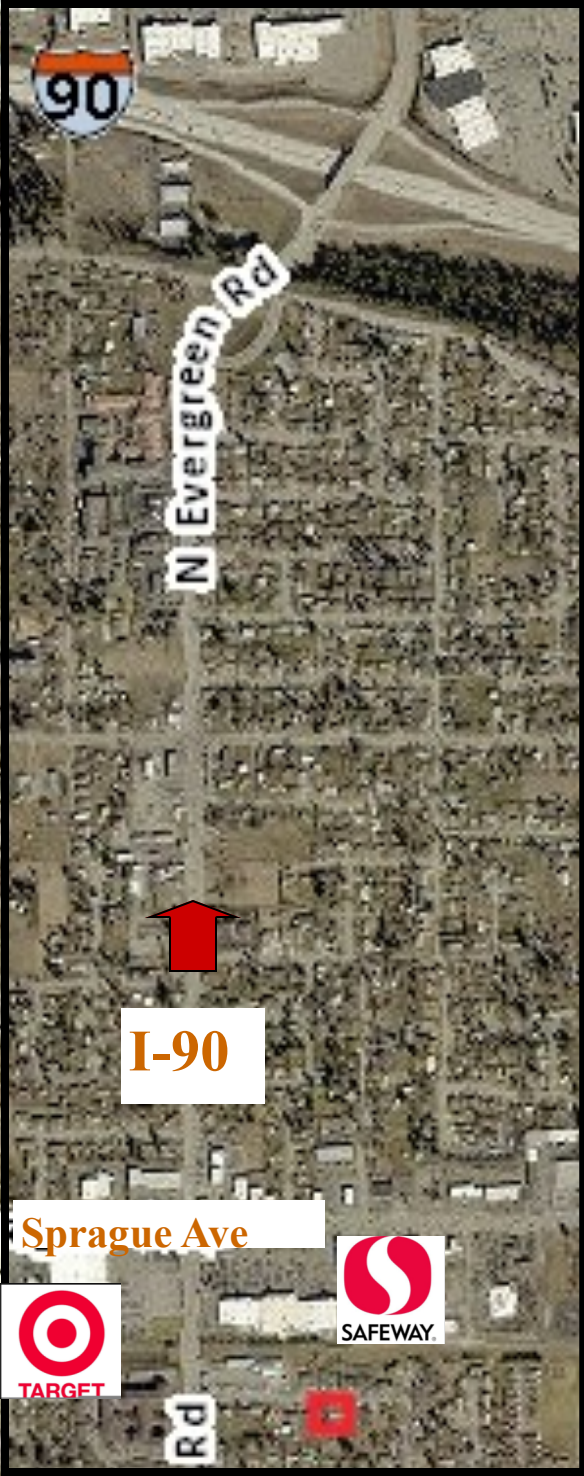
SITE PLAN/FLOOR PLAN



14108 E. 3rd Ave, Spokane Valley, WA 99216

G. Arger Co. Real Estate Inc.
(509) 926-5311 office

Maps



Located off of Evergreen Road and 3rd Ave in the Spokane Valley. Easy I-90 Access (Evergreen Corridor) and near a variety of Amenities and Medical.

14108 E. 3rd Ave, Spokane Valley, WA 99216

G. Arger Co. Real Estate Inc.
(509) 926-5311 office