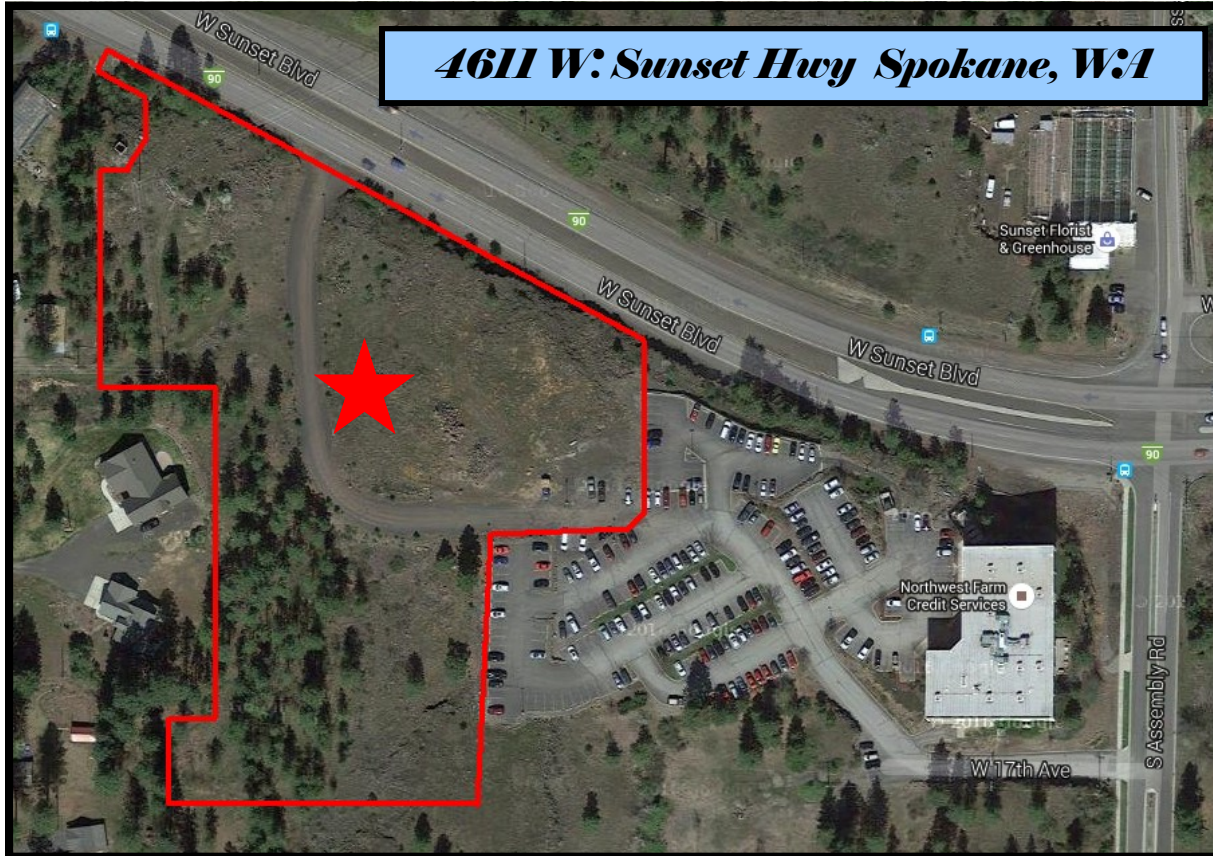


Build To Suit Commercial Land



- 4.875 +/- acres of vacant land
- Zoned General Commercial
- Build to suit site
- Geo-Tech Study & Topography/Survey
- Additional roadway entrance

- Utilities to site
- Preliminary design for drainage
- Spectacular Spokane skyline views
- Minutes to Spokane Int'l Airport, Downtown and I-90 Access/Visibility



Gene Arger, Broker
G. Arger Co. Real Estate Inc.
(509) 926-5311 office
(509) 844-8814 cell
ggarger@argerco.com
www.argerco.com

