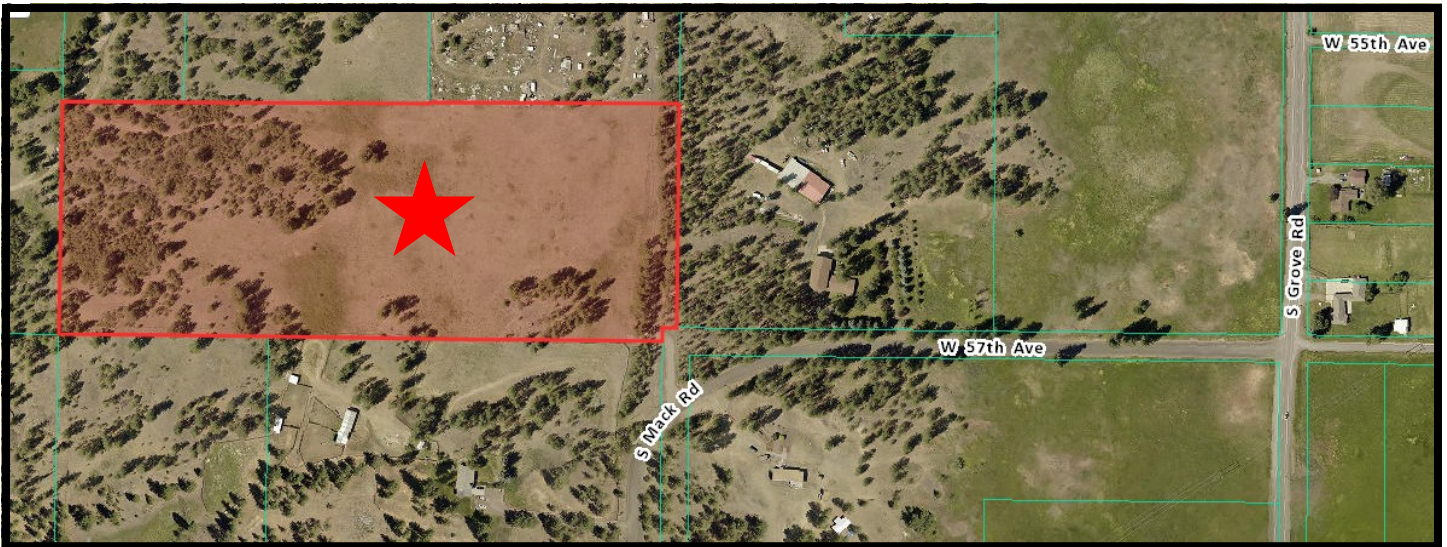


SW Spokane Acreage for Dream Home



6400 W: 57TH STREET

- Sales Price: \$209000.00
- Parcel #24041.9033
- 670,824 SF +/- Lot SF
- 15.40 Acres
- Features a PRIVATE WELL!

- Zoned UR (Urban Reserve)
- Minutes to Downtown Spokane
- Features completed site work access
- Beautiful pasture and treed acreage
- Prime Estate Dream Home Location

I-90 West to Grove Rd, Left (South) to 57th , Right (West) to sign



Gene Arger, Broker
G. Arger Co. Real Estate Inc.
(509) 926-5311 office
(509) 844-8814 cell
ggarger@argерco.com
www.argерco.com

